 Property Boundary

0 100 200 400 600 800 Feet



2014 Aerial

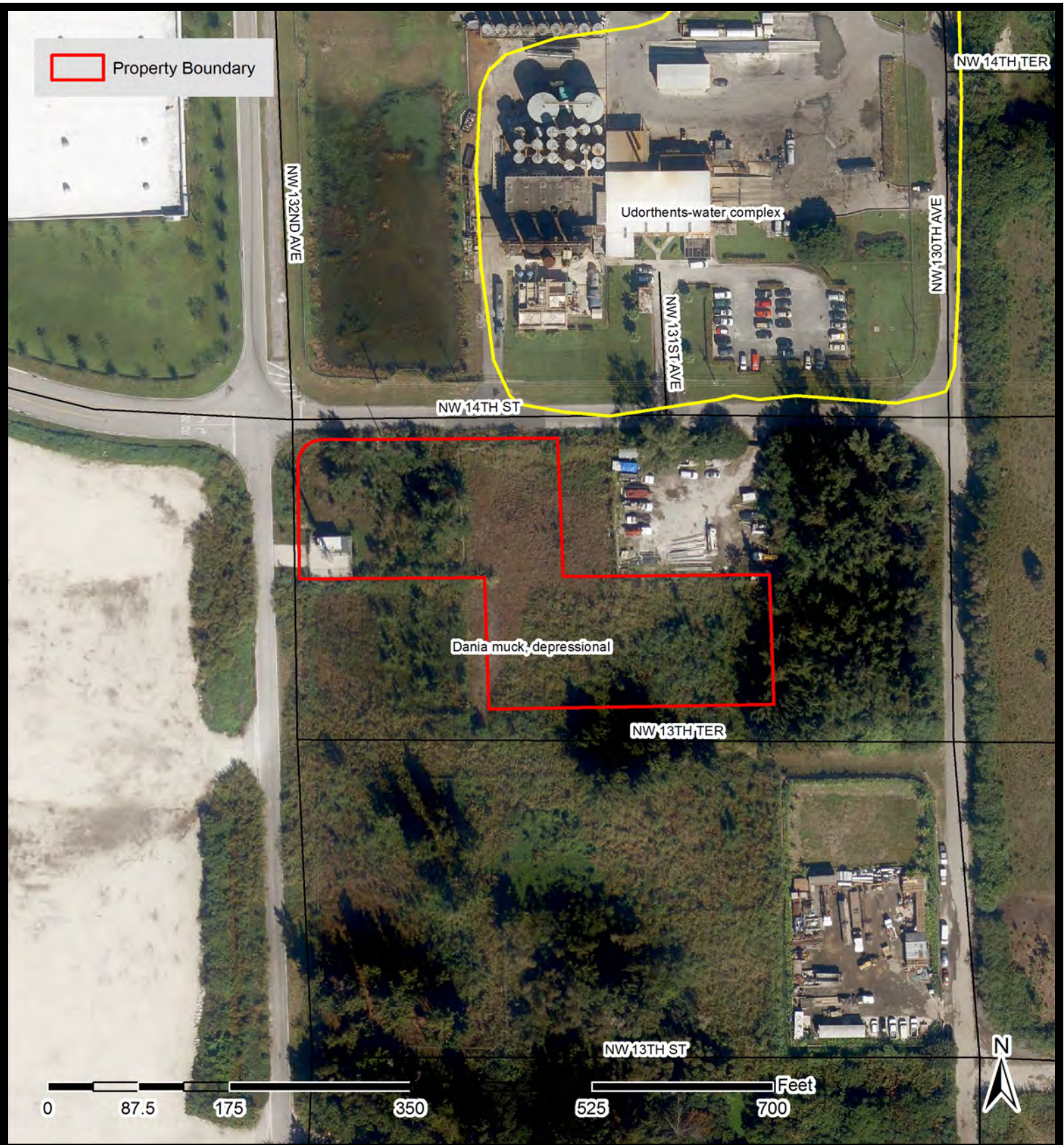
Southern Asphalt / Jose
Antonio Franco
MIAMI-DADE COUNTY, FLORIDA




RS Environmental Consulting Inc.
P.O. Box 161158
Miami FL, 33116
Phone: 305-383-3404
www.rs-env.com

Location Map
T-53S, R-39E, S-35

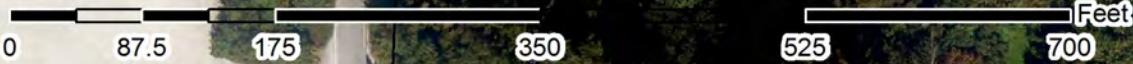
DRAWN BY: LVK	DATE: 1/31/2017
CHECKED BY: RWS	SCALE: NTS



 Property Boundary

Udorthents-water complex

Dania muck, depressional



Southern Asphalt / Jose Antonio Franco
 MIAMI-DADE COUNTY, FLORIDA

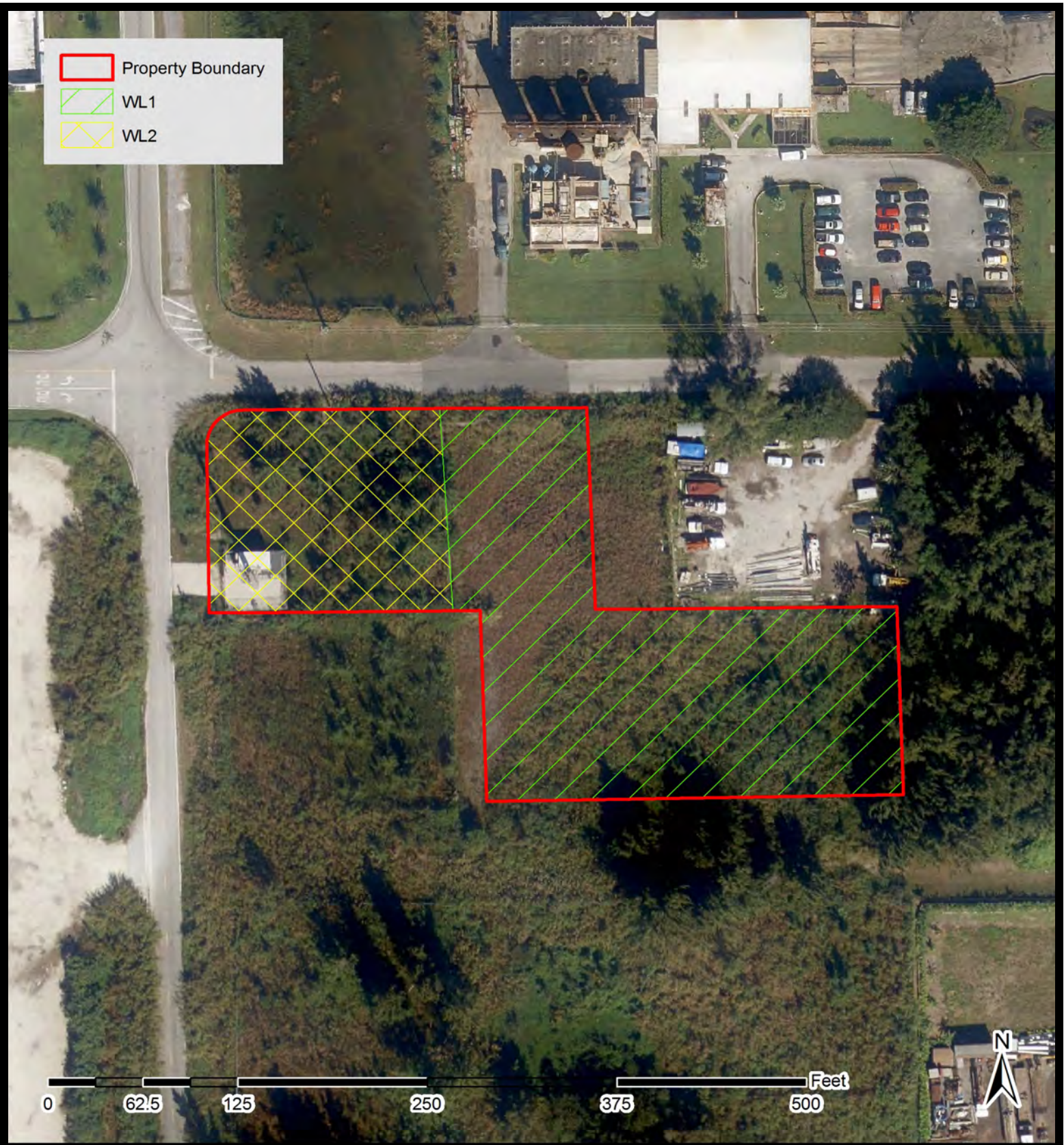





RS Environmental Consulting Inc.
 P.O. Box 161158
 Miami FL, 33116
 Phone: 305-383-3404
www.rs-env.com

2014 Aerial

Soils Map
 T-53S, R-39E, S-35

DRAWN BY: LVK	DATE: 1/31/2017
CHECKED BY: RWS	SCALE: NTS



	Property Boundary
	WL1
	WL2



Southern Asphalt / Jose Antonio Franco
 MIAMI-DADE COUNTY, FLORIDA


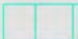
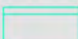


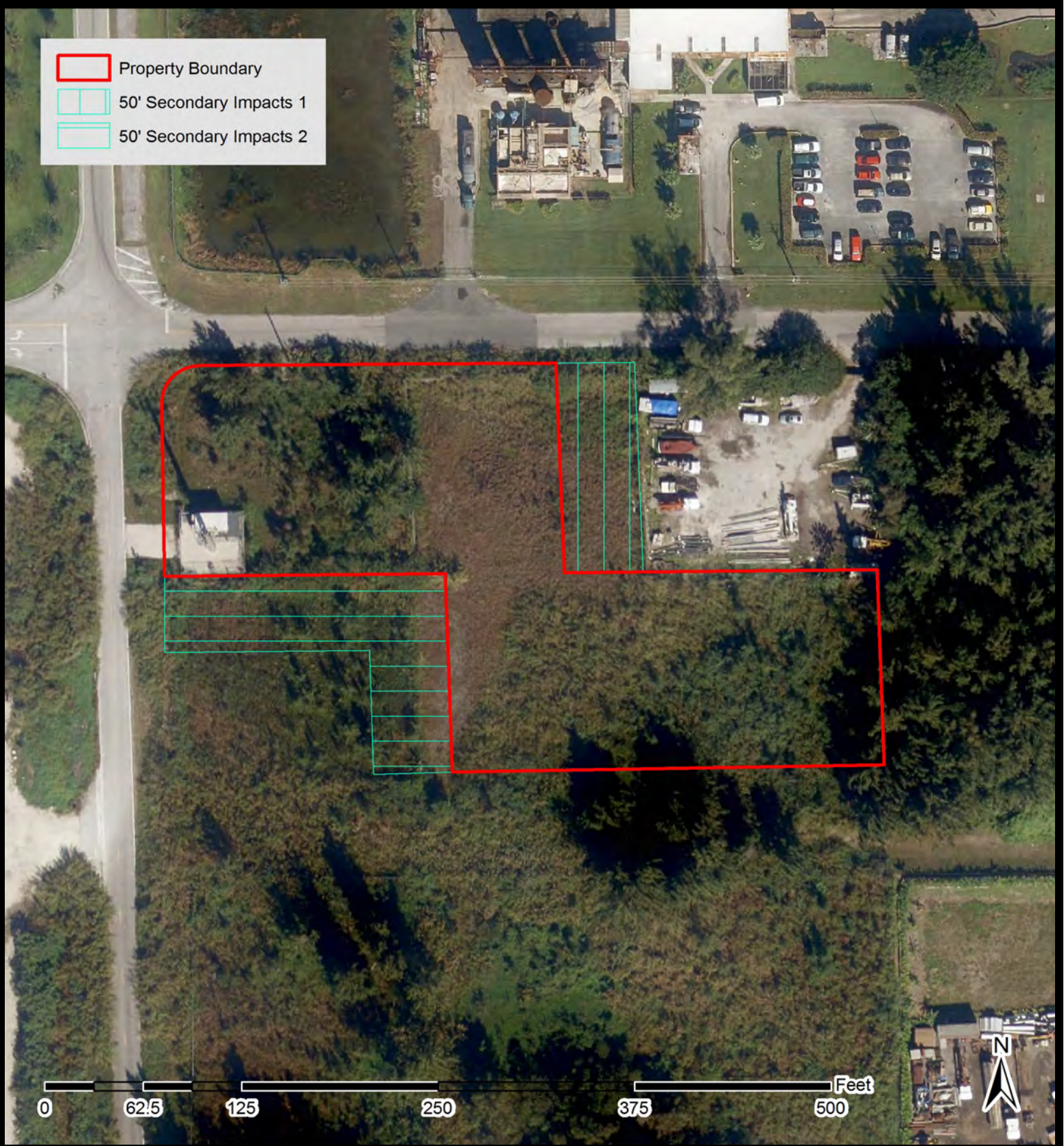
RS Environmental Consulting Inc.
 P.O. Box 161158
 Miami FL, 33116
 Phone: 305-383-3404
www.rs-env.com

2014 Aerial

Wetland ID Map
 T-53S, R-39E, S-35

DRAWN BY: LVK	DATE: 2/6/2017
CHECKED BY: RWS	SCALE: NTS

-  Property Boundary
-  50' Secondary Impacts 1
-  50' Secondary Impacts 2



0 62.5 125 250 375 500 Feet



Southern Asphalt / Jose
Antonio Franco

MIAMI-DADE COUNTY, FLORIDA



RS Environmental
Consulting Inc.
P.O. Box 161158
Miami FL, 33116
Phone: 305-383-3404
www.rs-env.com

2014 Aerial

Secondary Impacts Map
T-53S, R-39E, S-35

DRAWN BY: LVK

DATE: 1/7/2017

CHECKED BY: RWS

SCALE: NTS